

STEPHEN NEALL
EST

1982

GROUP

TRADE ACCOUNT

- INTERIORS -

Prince Albert Row, 79 Station Parade, Harrogate. North Yorkshire HG1 1ST
The Factory Building, Victoria Avenue, Harrogate. North Yorkshire HG1 1DX
Phone: +44 (0) 1423 521288 Email: showroom@stepheneall.co.uk

WWW.STEPHENEALLGROUP.CO.UK

OUR PARTNERED BRANDS

KITCHENS

Arrital
BORA
Gaggenau
Neff
Siemens
Sub-Zero and Wolf
Poliform
Stephen Neall Interiors

FURNITURE

B&B Italia
Baxter
Flexform
Kartell
Poliform
Porada
Wendelbo

INTERIORS

Buster + Punch
Listone Giordano
Mohebban
Mosa
Poliform
Rimadesio

LIGHTING

Artemide
Brokis
Flos
Orluna

BATHROOMS

Antoniolupi
Hansgrohe

STEPHEN NEALL GROUP

WWW.STEPHENNEALLGROUP.CO.UK

We are delighted that you have chosen to partner the Stephen Neall Group as a trade to trade supplier and can advise that your account now unlocks trade prices for all the major brands that are available from our organisation.

From time to time we may change or add to the brand pages, therefore, please check for updates before quoting to your clients.

Price lists are generally large comprehensive documents and intended for in-house use. For quotations, please ring +44 (0) 1423 521288 or email showroom@stepheneall.co.uk.

Our showroom and meeting room facility is available for you to use as an extension to your business. On Street pay and display parking can be found very close to both of our showrooms. Refreshments, assistance and internet access can be provided with a little prior notice.

Our office hours are 9.30am to 5.00pm from Monday to Saturday inclusive.





KITCHENS



Arrital

[VIEW BRAND PAGE](#)

Arrital represents what they have always designed, produced and sold: the world of the kitchen. The kitchen as a habitat, a space of relations between people and a vital place.



 **BORA**

[VIEW BRAND PAGE](#)

BORA extraction systems are unique, choosing to offer a small specialised product range rather than being a generalist.



GAGGENAU

[VIEW BRAND PAGE](#)

Gaggeneau produce kitchen appliances that are not only design leading but built to exacting standards.



[VIEW BRAND PAGE](#)

NEFF are proving a popular, modern choice in kitchen appliances including built in ovens, quality hobs, warming drawers and fridges.



SIEMENS

[VIEW BRAND PAGE](#)

Siemens develops home appliances that revolutionise your home, through cutting-edge technologies and an unmatched user experience.



From the first toast to the final bite, relish every moment and meal with Sub-Zero refrigeration and Wolf cooking.

[VIEW BRAND PAGE](#)



Poliform

[VIEW BRAND PAGE](#)

Poliform offers high-end Italian designed kitchens with sophisticated and innovative finishes.



STEPHEN NEALL ELEMENTS

Stephen Neall Elements custom made kitchens since 1982.

[VIEW BRAND PAGE](#)



FURNITURE



B&B
ITALIA

[VIEW BRAND PAGE](#)

B&B Italia: leader of high quality modern furniture, contemporary furniture, outdoor furniture and furnishing for home and businesses.



STEPHEN NEALL
TRADE
UP TO
- 25%
GROUP



MADE IN ITALY
VIEW BRAND PAGE

Every piece of Baxter is hand made in Italy using
the most exquisite leather.

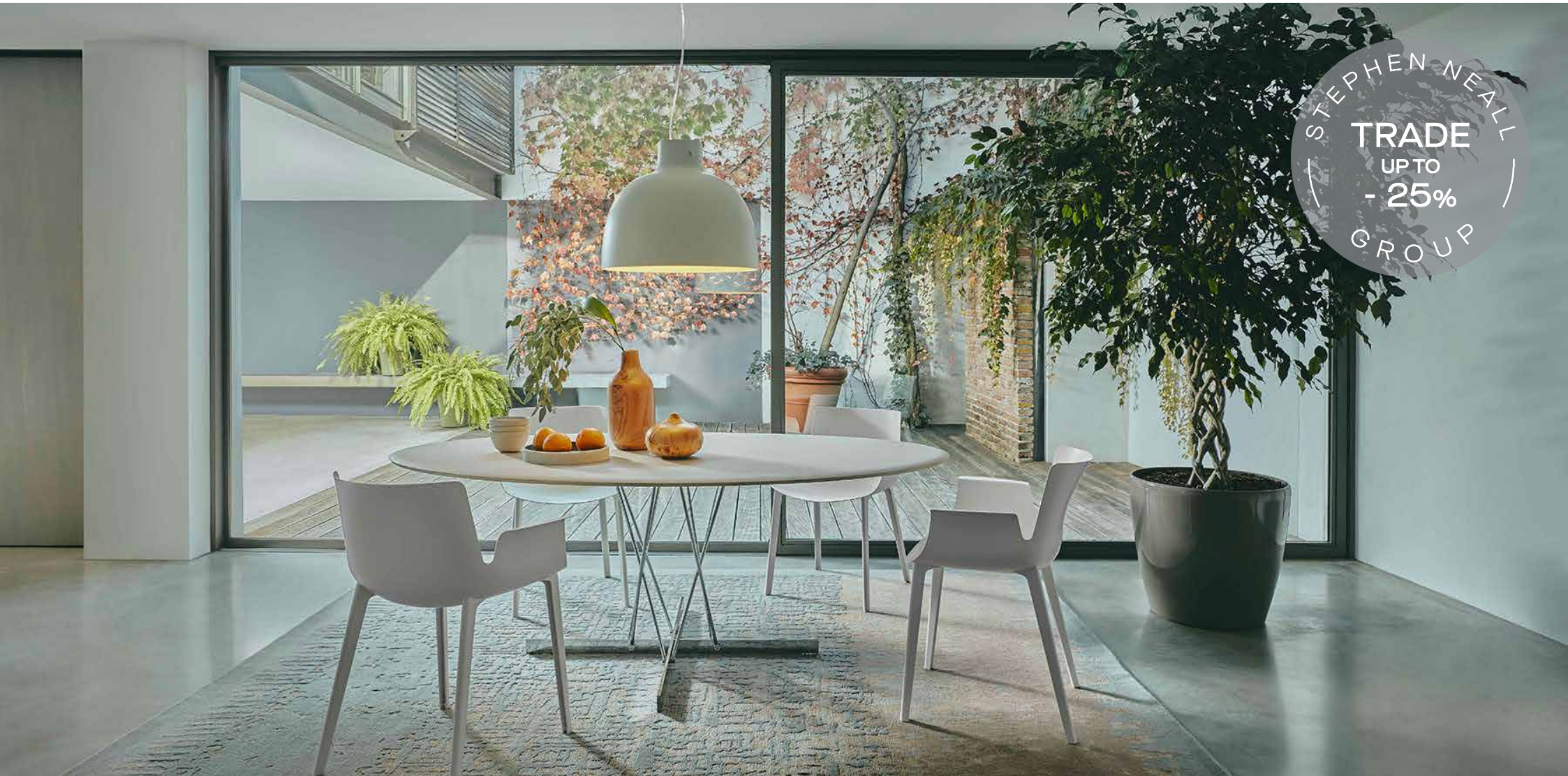


FLEXFORM

MADE IN ITALY

[VIEW BRAND PAGE](#)

Flexform produces a vast collection of home furnishings but its focus is on sofas, the company's core business.



STEPHEN NEALL
TRADE
UP TO
- 25%
GROUP

Kartell

[VIEW BRAND PAGE](#)

Collaborating with leading international designers, Kartell have continued to break the mould in furniture and lighting design.



Poliform

[VIEW BRAND PAGE](#)

Poliform is a leading player on the international furniture scene.



porada

[VIEW BRAND PAGE](#)

Porada is a luxury Italian furniture brand known for its exquisite designs, quality craftsmanship, and timeless elegance.



[VIEW BRAND PAGE](#)

With its deep roots in the mind set of Scandinavian design and the Danish tradition of craftsmanship, Wendelbo produces contemporary furniture that meets the needs of today's world.



INTERIORS



BUSTER + PUNCH

[VIEW BRAND PAGE](#)

Buster + Punch is a London-born home fashion label. We work with rare, solid materials to make extraordinary items for everyday use.



[VIEW BRAND PAGE](#)

Listone Giordano have been an innovative Italian manufacturer of hardwood floors since 1984



MOHEBBAN

MILANO

[VIEW BRAND PAGE](#)

Mohebban is considered to be one of the leading brands for Italian carpets and rugs.



Mosa.

[VIEW BRAND PAGE](#)

At Mosa, we have a passion for ceramics. For over 130 years, we have been manufacturing tiles using the purest materials and the magic of innovative Dutch design.



Poliform

[VIEW BRAND PAGE](#)

Poliform, the contemporary brand at the forefront of Italian furniture design for 50 years.



Rimadesio

[VIEW BRAND PAGE](#)

Rimadesio creates made-to-measure glass and aluminium doors, closets and shelving systems.



LIGHTING



Artemide[®]

[VIEW BRAND PAGE](#)

Artemide ranks as one of the world's most prestigious contemporary lighting manufacturers in the world.



BROKIS
VIEW BRAND PAGE

Brokis combines handblown glass with other refined materials such as wood and manually pressed metal.



FLOS

[VIEW BRAND PAGE](#)

Lighting design collections made of iconic and innovative lamps for home, outdoor lighting and architectural lights.



STEPHEN NEALL
TRADE
UP TO
- 20%
GROUP

orluna

[VIEW BRAND PAGE](#)

Orluna doesn't just sell beautiful LED downlights, uplights, spots and linear lights - they offer a beautiful lit effect.



BATHROOMS



antoniolupi

[VIEW BRAND PAGE](#)

For the past 50 years, antoniolupi have stood out around the world in the design and manufacturing of bathroom furniture.



hansgrohe

[VIEW BRAND PAGE](#)

German engineered showers and taps for the bathroom and kitchen, featuring shower heads, shower systems, basin and kitchen taps.

STEPHEN NEALL GROUP

WWW.STEPHENNEALLGROUP.CO.UK

Most of our partners are International brand names, market leaders in their field and with product lines designed by World leading Architects and Designers.

It is considered a privilege that our organisation has been accepted to represent these Brands.

At the Stephen Neall Group, our selling prices are driven by our Brand partners and the international marketplace, that said, we continually price check other sellers in the UK and with mainland Europe to ensure that we remain as competitive as possible. We do not practice perceptual discounting.



[CLICK HERE TO SEE ALL BRANDS ONLINE](#)



STEPHEN NEALL
EST
1982
GROUP

Prince Albert Row, 79 Station Parade, Harrogate. North Yorkshire HG1 1ST
The Factory Building, Victoria Avenue, Harrogate. North Yorkshire HG1 1DX
Phone: +44 (0) 1423 521288 Email: showroom@stepheneall.co.uk

WWW.STEPHENEALLGROUP.CO.UK